

A STEP FURTHER

As well as the products covered in this leaflet, Air Vent Technology offers an extensive range of supply/extract units and associated ancillary equipment. Catering for air volumes up to 20m³/s and available for internal and external applications, most applications can be accommodated. Among the many variants we are able to cover are the following:

Cases

Single skinned or double skinned with 25mm or 50mm thick panels
 Different panel infill including a combination of high-density rockwool and barrier mat to give high noise reduction.
 Differing panel skin materials including Stainless Steel, Aluminium and plastic coated sheet steel.
 Powder coat paint finish to any BS or RAL number to either internal, external or both surfaces.
 Casings supplied in 'flat pack' form to facilitate site assembly.

Components

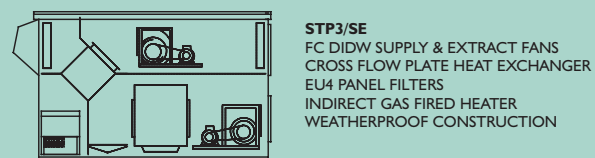
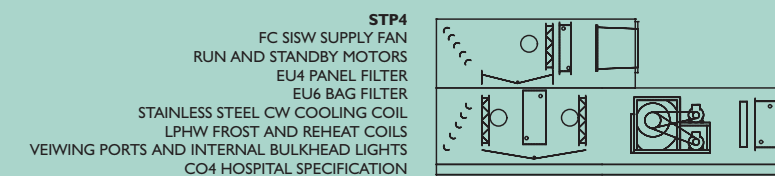
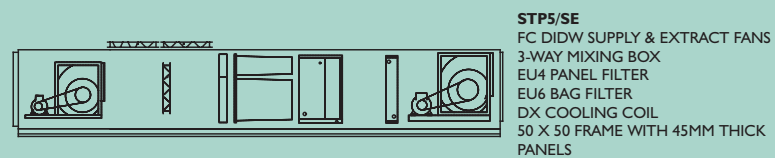
The following components can be readily catered for:
 Filters - Carbon, Hepa, Grease, Washable
 Run-a Round coil systems
 Thermal wheels
 Gas fired heaters - Indirect and Direct
 Fans - SISW, Duplex (for low profile), Twin
 Motors - 1 Ph, 2 Speed, Mounted out of airstream, fitted with standby.

Specifications

Units can be designed to meet the requirements of the following specifications:
 DEO Spec 037
 CO4

Controls

Any variation of controls package can be supplied ranging from simple pre-wiring of a motor to an external isolator to an in-built control panel pre-wired to motors, damper motors, sensors, etc..



We reserve the right to amend details without notification.



**AIR VENT
 TECHNOLOGY**

QUALITY RANGE

ELECTRIC HEATER BATTERIES

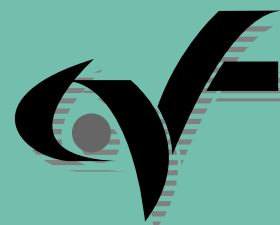


Stab-in or duct mounted

Rectangular or Circular Ducts

Single or three phase

Manual reset thermal protection



**AIR VENT
 TECHNOLOGY**

Unit 1, Regents Court,
 Walworth Industrial Estate,
 Andover, Hampshire SP10 5NX
 Tel: 01264 356415
 Fax: 01264 337854
 email: avt@globalnet.co.uk
 website:
<http://www.airventech.co.uk>



Certificate No: GB9455

HEATER SPECIFICATIONS

Calculation

Utilising our range of stock elements, the range of heaters stated on the table below are available.

Heater ratings can be calculated using the following formula:

$$KW = m^3/s \times 1.21 \times \text{Temp rise } ^\circ\text{C}$$

When determining duct sizes, consideration MUST be given to air velocity. This should not fall below 2m/s.

Heater

Heater elements are of the sheathed, tubular incolloy 800 type, 8mm in diameter. They have an internal nickel chromium resistance wire centrally located and insulated with compressed magnesium oxide powder. The 50mm cold ends are sealed with a silicone rubber.

The elements are preformed and arranged within the duct to give an even air flow over them.

Elements are secured into the terminal box via air tight glands.

Elements are linked and fitted with terminal connectors to suit required loadings.

All heaters are fitted as standard with a manual reset high temperature safety cutout rated at 120°C.

Casing

Internal casings, either rectangular or circular, are constructed from spangled galvanised sheet steel.

External casings are constructed from aluminium with fully welded terminal boxes.

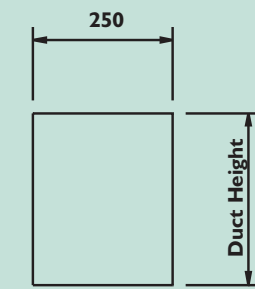
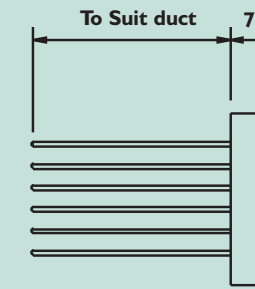
Heater Options

Kw Rating	415 Volt Three Phase					
	Number of steps					
	1	2	3	4	5	6
6	•	•				
7.5	•					
9	•	•	•			
12	•	•		•		
13.5	•		•			
15	•	•			•	
18	•	•	•	•		•
21	•	•				
22.5	•		•		•	
24	•	•		•		
27	•	•	•			•
30	•	•		•	•	
36	•	•	•	•		•
45	•	•	•		•	•
54	•	•	•		•	•

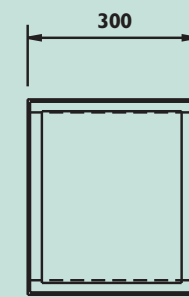
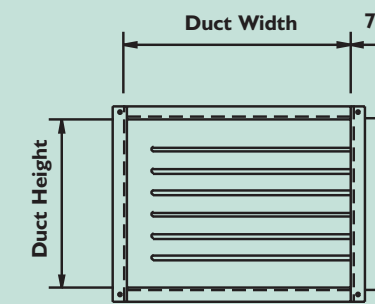
Kw Rating	240 Volt Single Phase					
	Number of steps					
	1	2	3	4	5	6
0.5	•					
1	•	•				
1.5	•		•			
2	•	•		•		
2.5	•					
3	•	•	•			
4	•	•		•		
5	•	•				
6	•	•	•	•		•
7.5	•		•			
9	•	•	•			•
10	•	•		•	•	
12	•	•	•	•		•
15	•	•	•		•	•
18	•	•	•	•		•

Note: Larger heaters are available on request

DIMENSIONS

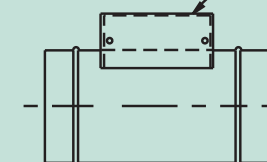


EHS

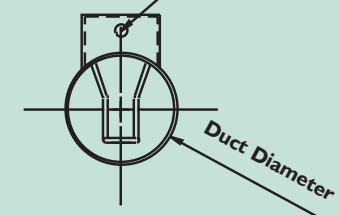


EHD

Removable Cover to Access Terminals



Cable Entry Points



EHC

CONTROL PANELS

Designed with quick and easy installation in mind, external wiring is kept to a minimum.

A Mains supply is taken to the panel door interlocked isolator and then outputs are taken to the fan, heater and safety circuits.

A duct sensor is supplied (or room if required) pre-wired to the panel with 10m of cable.

Switches on the front of the panel allow control of the fan and heater. All outputs to the fan and heater are protected via an MCB.

The whole panel can be controlled via a fire alarm contact or a seven day time clock to turn off and on in a controlled manner.

